



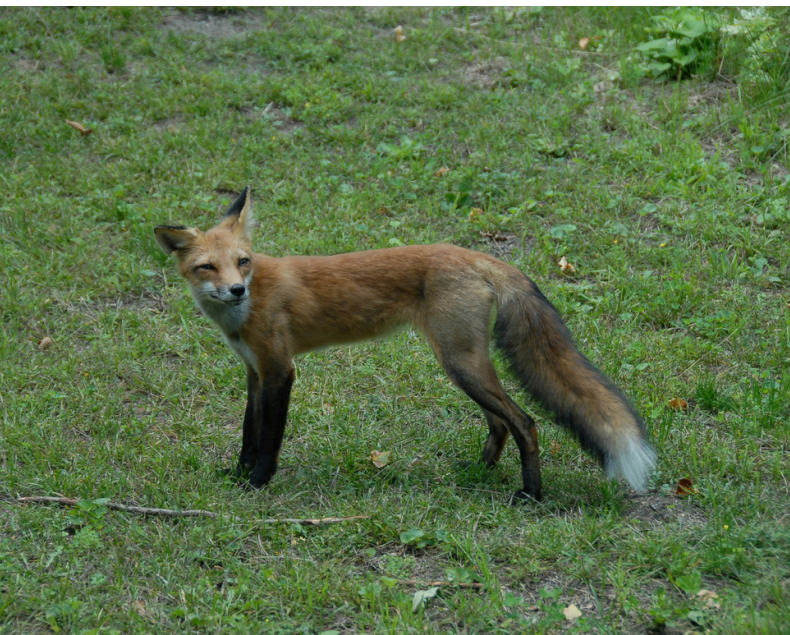
Controlling foxes

Red foxes (*Vulpes vulpes*) were introduced to Australia in the mid-1800s and are now widespread in Victoria. They:

- Prey on native fauna, contributing to population declines of over 200 species in Victoria
- Cause agricultural losses (lambs, poultry) and spread disease
- Live in a wide variety of landscapes, from urban areas to remote intact native vegetation
- Are a declared pest species under Victorian law. Landholders are legally required to take reasonable steps to prevent their spread and eradicate them where possible.

Location and habitat

These fox control methods are relevant statewide across a range of habitats.



General information

- Using a range of methods in combination is the best way to control foxes, such as shooting, trapping, baiting, den fumigation and exclusion fencing
- Coordinate efforts to control foxes across large landscapes by collaborating with neighbours
- Monitor fox activity using spotlighting, trail cameras, scats, and prey remains
- Coordinate rabbit control with fox control to reduce food source
- Follow animal welfare and firearms legislation and chemical use regulations.

Methods

Shooting

- Shooting foxes is the most effective control method and removes any risk of impact to other species when undertaken by experienced shooters
- When shooting pest animals, follow Victorian animal welfare and firearms legislation

Trapping

- Use cage or padded-jaw leg-hold traps (purchase from commercial suppliers)
- Trapping is difficult and predominantly used only when other methods of control are not applicable (i.e. residential areas)
- Follow animal welfare legislation on trap specifications, checking traps, providing food and water, and humane killing of trapped foxes

Baiting

- Develop a baiting plan with guidance from government directions
- If appropriate, notify neighbours of your proposed fox control activities
- Choose your bait type (buried meat baits, buried shelf-stable baits or Canid Pest Ejectors (CPEs) with 1080 or PAPP (para-aminopropiophenone) depending on your baiting plan
- For best results, undertake baiting pulses over a large network of bait stations ideally at a landscape scale. Consult and coordinate with neighbours if possible
- Replace baits regularly as per the label instructions, government directions and legislation
- Follow chemical use legislation, including gaining a 1080 and PAPP permit, or use a suitably qualified contractor

Frequent re-application of control methods is required to prevent foxes returning into treated areas, which can occur as soon as two weeks after control works have ceased.



Methods (cont'd)

Den Fumigation

- Most effective from August-September during breeding season
- Use carbon monoxide cartridges (DEN-CO-FUME®)
- Follow instructions on the label of fumigants as well as any guidance provided by DEECA or Agriculture Victoria
- Confirm the presence of foxes and cubs with trail cameras prior to fumigation to avoid risk to off target species


Exclusion Fencing


- Can be effective for protecting threatened fauna species but could be costly and labour-intensive requiring regular monitoring to ensure the fence is not breached.

Further information

If you have a conservation covenant, please consult with your Trust for Nature regional staff member to ensure land management activities are in line with your covenant deed.

For further advice and support, please contact Trust for Nature.

 (03) 8631 5838

 trustfornature@tfn.org.au

Disclaimer

Trust for Nature and its employees do not guarantee that the publication is without flaw of any kind or is wholly appropriate for your particular purposes and therefore disclaims all liability for any error, loss or other consequence which may arise from you relying on any information in this publication

Maintenance and monitoring

- Continue spotlighting and camera checks throughout control efforts
- Replace baits regularly and maintain bait stations
- Inspect fences and repair breaches
- Record control actions and outcomes
- Work with neighbours, Landcare groups and public land managers for coordinated control programs



Safety

Always wear appropriate personal protective equipment (PPE) when undertaking land management. Follow all label instructions on equipment and local regulations. Be mindful of weather conditions. Do not conduct land management on days of extreme or catastrophic fire danger or total fire ban.

